



HOW TO MEASURE COUNTERTOPS

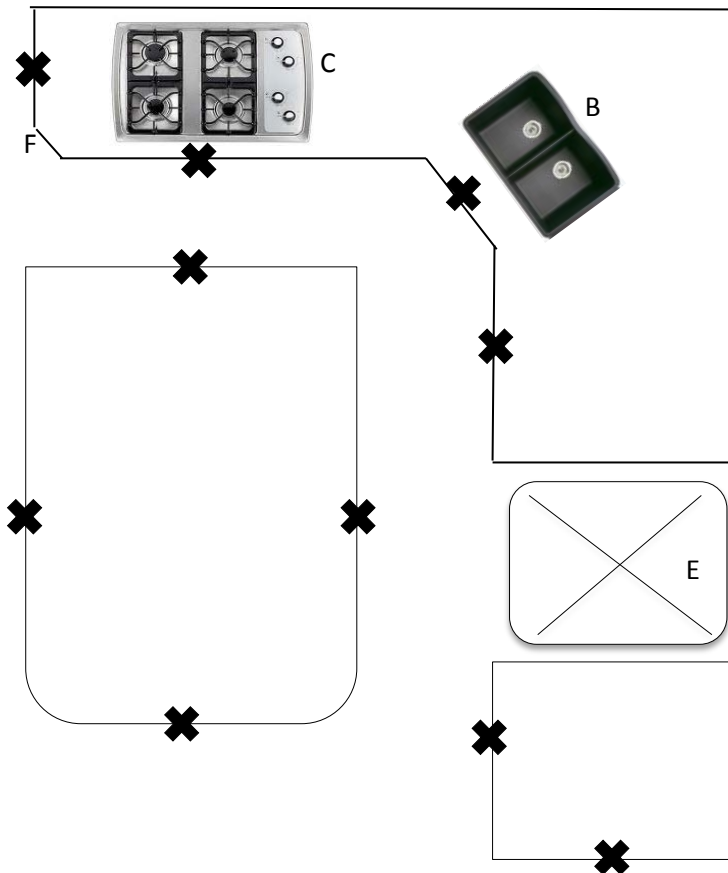
1 GETTING STARTED

You can easily measure your own countertop space and supply a rough drawing. All you need to do is measure the length and width of the existing countertop and include backsplashes if any. Please draw the location of the sink, dishwasher, cooktop or stove and refrigerator also.

Before you begin you will need a tape measurer, pencil and ruler.

2 DRAWING YOUR COUNTERTOPS

Begin sketching out the basic shape of your kitchen layout. Below is a checklist that should assist you with indicating the appropriate items.



✓ CHECKLIST

- ☐ **A - SKETCH**
Sketch out a basic shape of your kitchen layout, include all related pieces.
- ☐ **B - MARK SINK**
Mark sink location and indicate type of sink (single, double, undermount or drop in).
- ☐ **C - MARK STOVE**
Mark stove location and indicate type of stove (cooktop, freestanding or slide-in).
If it's a slide-in, does it have a small piece of countertop behind it?
☐ yes ☐ no
- ☐ **D - IDENTIFY EDGES**
Mark with (x) all exposed edges that need to be finished.
- ☐ **E - MARK NON-COUNTERTOP AREAS**
Indicate any area on the plan that is not going to be stone, like pantry area, refrigerator area, etc.
- ☐ **F - IDENTIFY RADII**
Indicate radius cuts or special areas.

③ MEASURING YOUR COUNTERTOPS

Using the sketch you have completed, indicate the measurements of each piece in inches, be sure to record all measurements accurately. Although your countertop will be measured by a professional prior to fabrication, it is important for you to be as precise as possible in order to obtain an accurate estimate.

EXAMPLE 1

STEPS FOR MEASURING

A - MEASURE LENGTH

To measure the length of your existing countertop, measure along the wall from one edge to the opposite edge.

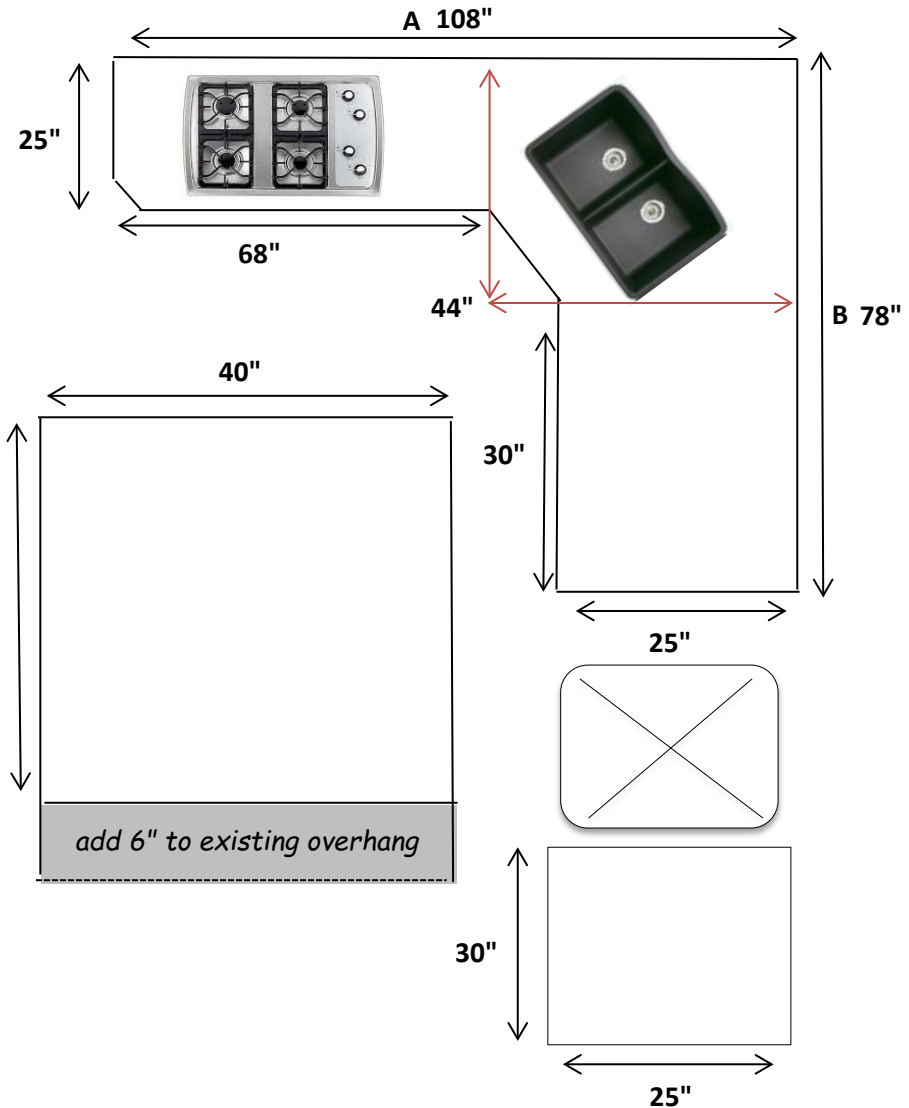
B - MEASURE WIDTH

To measure the length of your existing countertop, measure from the back wall to the finished front edge.

C - MEASURE OVERHANGS

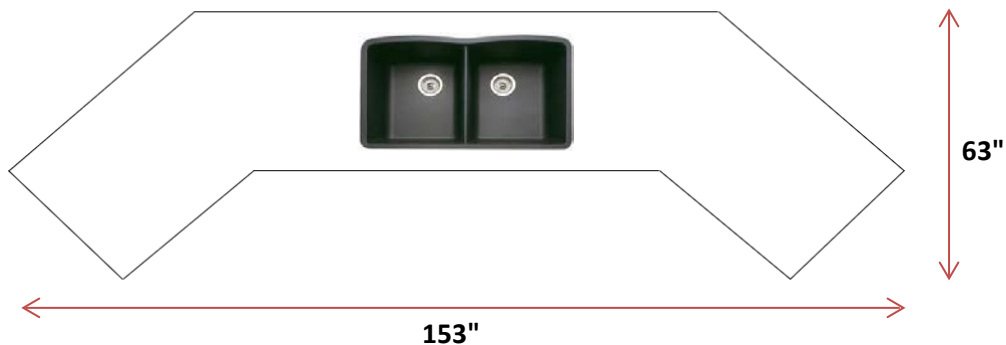
Whether measuring your existing overhang, increasing the overhang or decreasing the overhang, note where the existing countertops ends and where you want to extend or decrease the new countertop.

Note: Every rounded/angled piece should be measured as if it were rectangular in shape. Measure the furthest distance possible from the rounded/angled side to the opposite side.



EXAMPLE 2

Batwing Island





GRAPH PAPER

